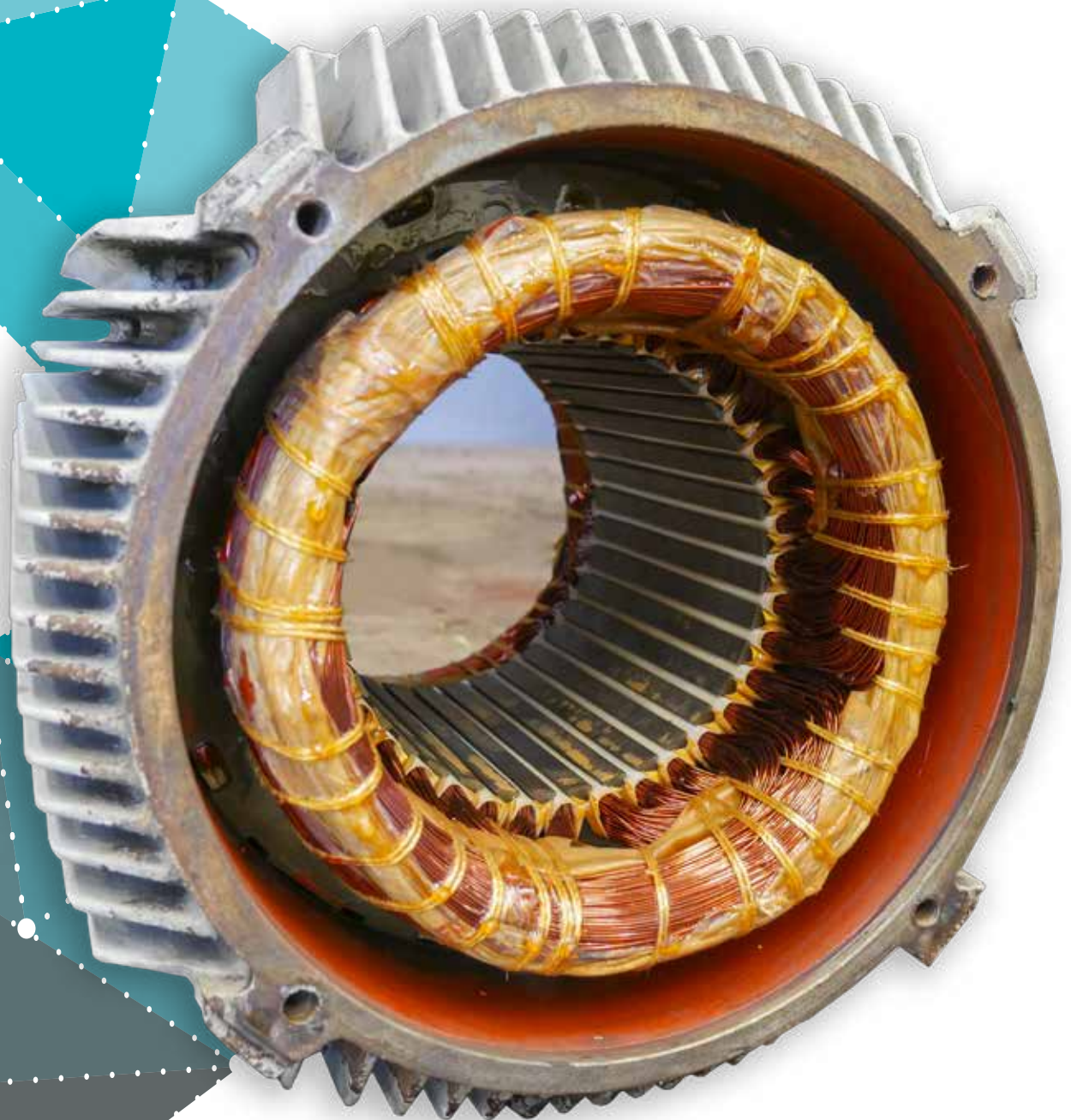


TecnecoForni
ecology and energy recovery



Tecflam
burners and thermal machines

TecnecoForni
ecology and energy recovery

PRODUCTION ENGINEERING PERSONALISATIONS ASSISTANCE

from the wide range and flexibility
of burners so far designed and produced, our
technical department is surely
capable of providing an answer
to your needs of operation, economy,
management and reliability

Tecflam
burners and thermal machines

TABLE OF CONTENTS

04 Pyrolytic Kilns
Economy and Combi

06 Pyrolytic Kilns
Stripper

08 Drying
Kilns

10 Remote Assistance 4.0
Industry



PYROLYTIC KILNS ECONOMY AND COMBI

Specially made for the elimination of resins and coatings of electric motors and, in general, for the thermal cleaning of metallic surfaces with controlled combustion.

These kilns are available in two versions:

- ECONOMY: allows the demolition of coated resins;
- COMBI: allows the demolition and drying of coated resins.

The process is based on the pyrolytic decomposition of resins, which is carried out at a temperature of 390-420°C, with development of gases which are burned in the post-combustion chamber at a temperature of 850°C.

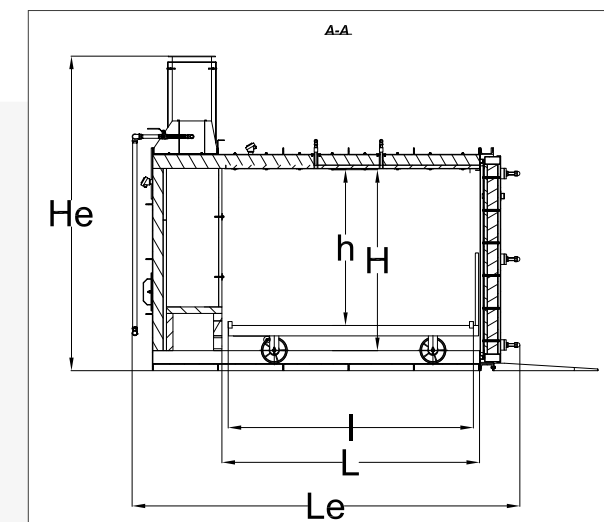
The kilns are in full compliance with the current regulations of the regions for the authorization of emissions into the atmosphere.

TECHNICAL FEATURES

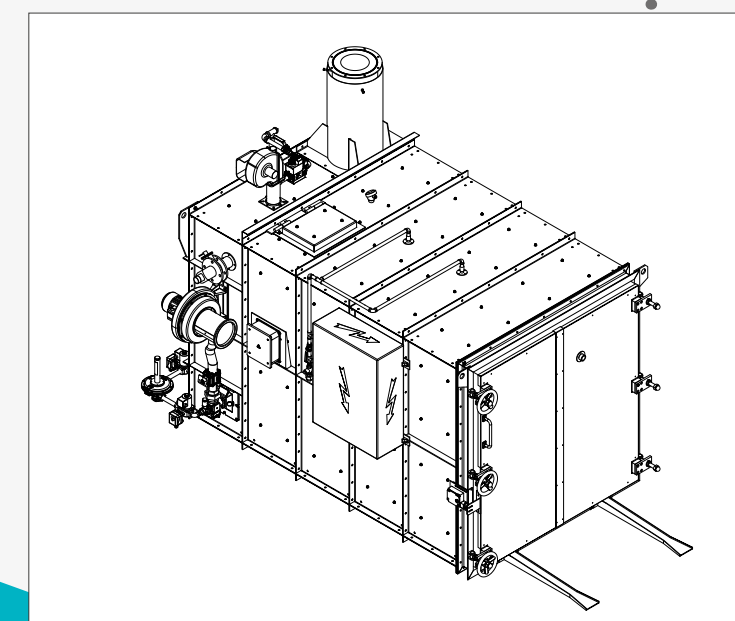
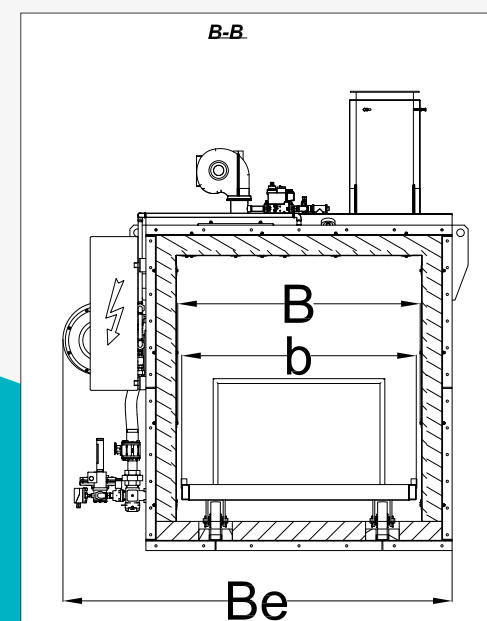
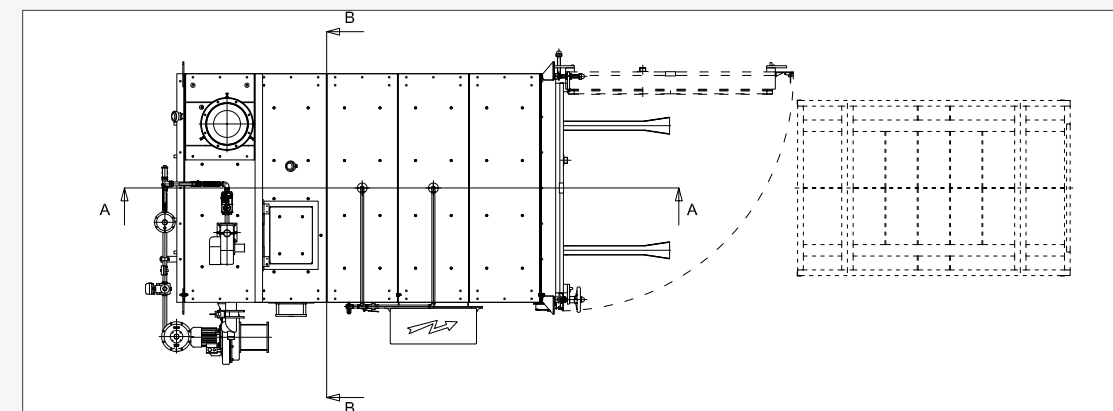
- 1 treatment chamber consisting of a painted steel structure, internally covered with stainless steel plates which are placed over insulating material;
- 2 post-combustion chamber separate from the treatment chamber with a suitably thermally insulated wall;
- 3 thermal group consisting of electrical resistors or burners
- 4 chimney internally insulated, customized according to the installation;
- 5 electrical control panel with PLC to operate the process;
- 6 trolley for loading the parts.

DIMENSIONS

MODEL	LOADING DIMENSIONS			INTERNAL DIMENSIONS			EXTERNAL DIMENSIONS		
	b	h	l	B	H	L	Be	He	Le
224	1200	1200	1400	1300	1400	2000	2000	2400	2300
225	1200	1200	1900	1300	1400	1500	2000	2400	2800



“
Tecnology,
and remote
assistance
”





PYROLYTIC KILNS STRIPPER

Unlike the Economy series, the Stripper has a larger post-combustion chamber and for some models a larger treatment chamber.

Also the Stripper kilns can be offered in two versions:

- STANDARD: allows the demolition of coated resins;
- COMBI: allows the demolition and drying of coated resins.

The Combi version, especially if it is of large dimensions, can be equipped with a hot air recirculation system inside the chamber, which activates during the drying phase of the resins.

The kilns are in full compliance with the current regulations of the regions for the authorization of emissions into the atmosphere.

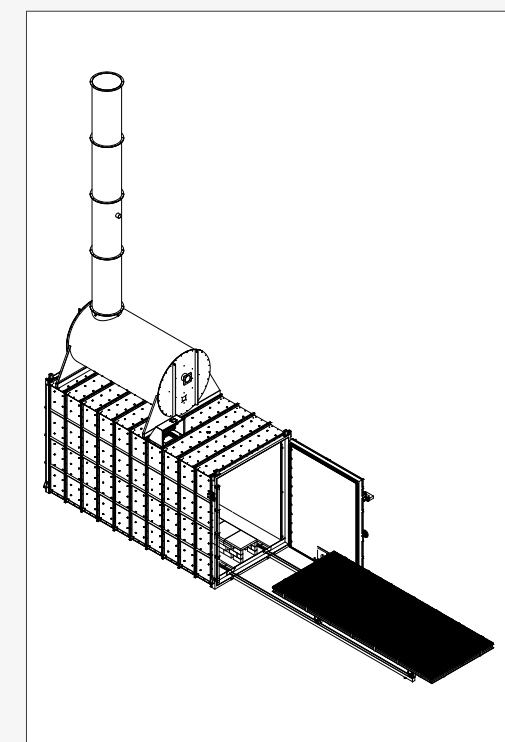
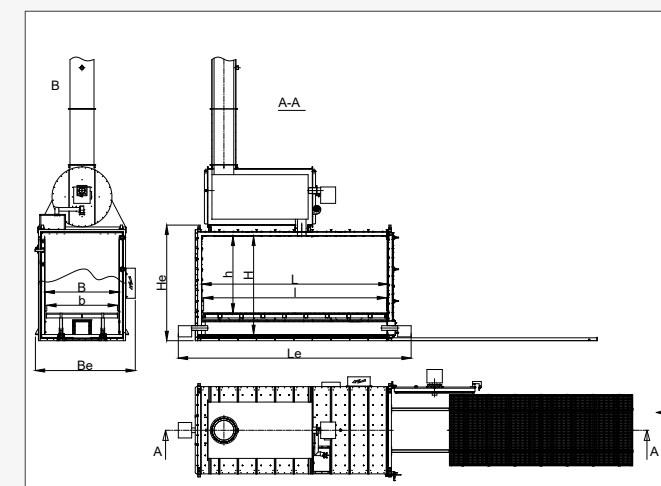
TECHNICAL FEATURES

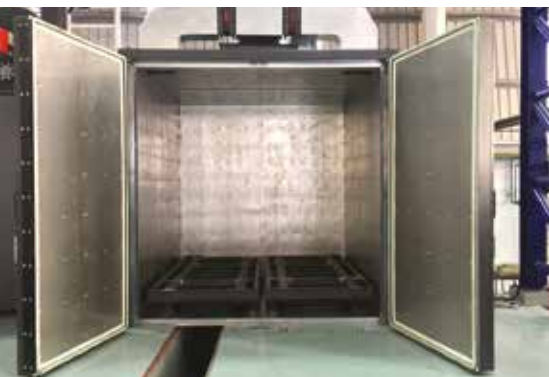
- 1 treatment chamber consisting of a painted steel frame, internally covered with stainless steel plates which are placed over insulating material;
- 2 cylindrical formed post-combustion chamber connected to the treatment chamber by a passage chimney, internally coated with refractory bricks;
- 3 for better heat distribution a tunnel is placed longitudinally in the chamber, found underneath the trolley;
- 4 thermal group consisting of electrical resistors or burners;
- 5 chimney internally insulated, customized according to the installation;
- 6 electrical control panel with PLC to operate the process;
- 7 trolley for loading the parts.

DIMENSIONS

MODEL	LOADING DIMENSIONS			INTERNAL DIMENSIONS			EXTERNAL DIMENSIONS		
	b	h	l	B	H	L	Be	He	Le
113	1100	1100	1400	1100	1700	1500	1600	2050	2100
114	1100	1100	1900	1100	1700	2000	1600	2050	2600
115	1100	1100	2400	1100	1700	2500	1600	2050	3100
224	1200	1350	1900	1300	1900	2000	1800	2300	2600
225	1200	1350	2400	1300	1900	2500	1800	2300	3100
226	1200	1350	2900	1300	1900	3000	1800	2300	3600
335	1400	1600	2400	1500	2150	2500	2000	2500	3100
336	1400	1600	2900	1500	2150	3000	2000	2500	3600
337	1400	1600	3400	1500	2150	3500	2000	2500	4100
423	1600	2100	1400	1300	2650	1500	1800	3000	2100
434	1600	2100	1900	1500	2650	2000	2000	3000	2600
435	1600	2100	2400	1500	2650	2500	2000	3000	3100
436	1600	2100	2900	1500	2650	3000	2000	3000	3600
446	1600	2100	2900	1700	2650	3000	2200	3000	3600
447	1600	2100	3400	1700	2650	3500	2200	3000	4100
448	1600	2100	3900	1700	2650	4000	2200	3000	4600

“
Technology,
and remote
assistance
”





DRYING KILNS

These are meant for the polymerisation of the coated resins of electric motors windings.

They are equipped with hot air generator, with air recirculation, fueled with electrical resistors or gas burners.

TECHNICAL FEATURES

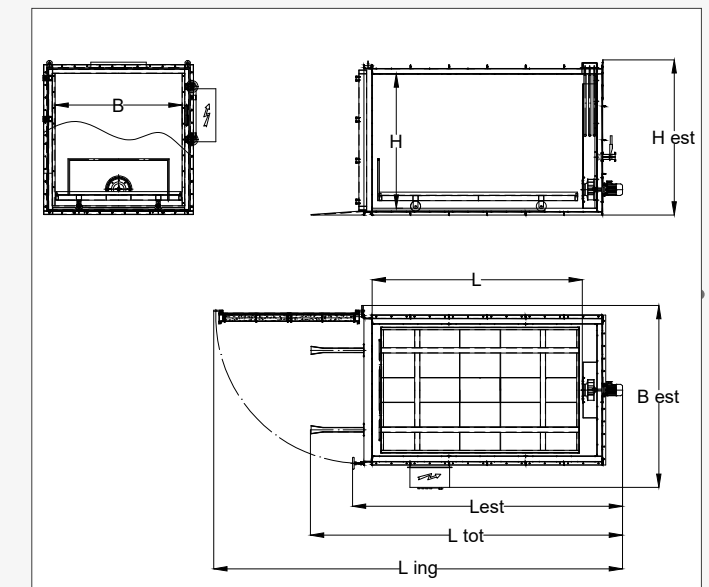
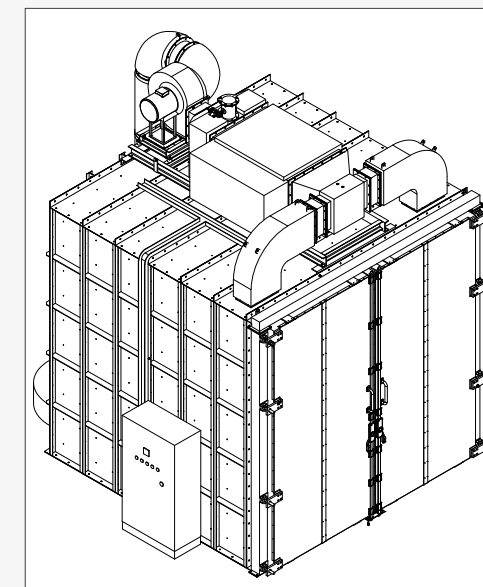
- 1 modular construction consisting of a painted steel structure, covered internally with galvanized sheet placed over insulating material;
- 2 thermal group consisting of electrical resistors or burner, and high efficiency recirculation fan;
- 3 control of the thermal group by means of a temperature controller connected to a temperature probe installed on the wall of the kiln;
- 4 electrical control panel with general switch, emergency button, temperature controller and timers to set process parameters;
- 5 trolley for the loading of the parts.



DIMENSIONI

MODEL	INTERNAL DIMENSIONS			EXTERNAL DIMENSIONS				
	b	h	l	Best	Hest	Lest	Ltot	Ling
6	750	850	900	1420	1120	1670	2350	2570
12	1000	1000	1200	1670	1270	1970	2650	3120
18	1100	1300	1300	1770	1570	2070	2750	3320
28	1100	1850	1350	1770	2120	2220	2900	3470
45	1500	2000	1500	2170	2270	2470	3150	4120
80	2000	2000	2000	2670	2270	3070	3750	5220
130	2000	2000	3000	2670	2270	4070	4750	6220

“
Tecnology,
and remote
assistance
”



TecnecoForni

ecology and energy recovery

The PLC is still to this day considered the main control center for production machines in the 4.0 industry and can be seen as the central processor for all real-time decisions in the production process.

PLCs have been designed to meet three basic needs: be programmed, give responses on time and high reliability. The main challenges that PLC designers face today are:

- complete personalisation following the requests of the client;
- ensure system security;
- elaborate the instructions allowing the best performance.

Tecflam
burners and thermal machines

REMOTE ASSISTANCE

INDUSTRY 4.0

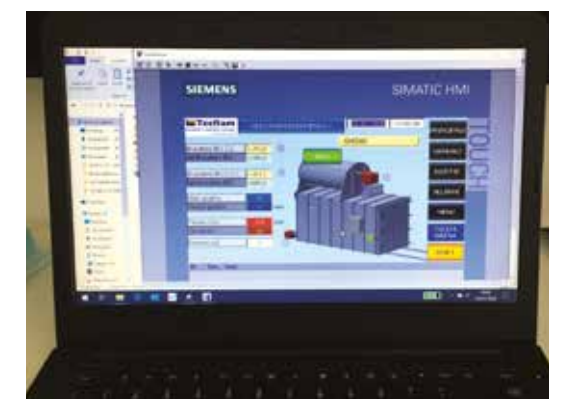


CONTINUOUS EVOLUTION

Our kilns are equipped with networked interconnection systems that allow supervision and remote control.

Some advantages of our solution:

- management and control via PLC;
- package complete of hardware and software for implementation;
- secure VPN connection;
- easy to configure and use;
- ability to receive faster assistance via remote connection;
- simple and intuitive interface between man and machine;
- compliance with the latest safety parameters;
- remote control system;
- continuous monitoring of process conditions.



Tecflam

Tecflam s.r.l.

via Curiel, 3 (Corte Tegge) - 42025 Cavriago Reggio Emilia, Italy
tel. +39 0522 944207 - fax +39 0522 494091
tecflam@tecflam.it - www.tecflam.it



Azienda con Sistema Qualità
Certificato ISO 9001
Nr. certif. 50 100 10767

ERC



TecnecoForni

ecology and energy recovery
marchio di Tecflam s.r.l.
www.tecnecoforni.it

visit us on

